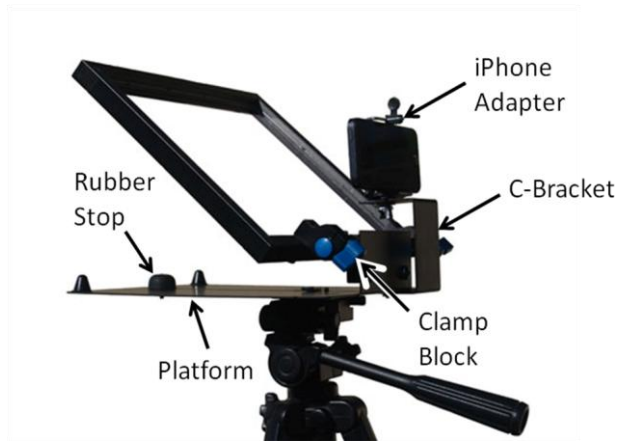


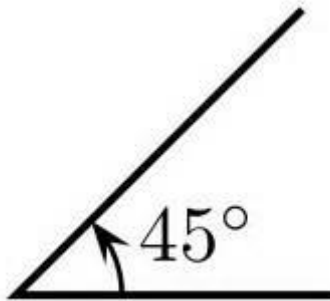
Directions for Assembling the R812-1.1

Thank you for your purchase. Go to Interactmedia.net to learn more. If you have questions, contact Scott at 248-660-4984 or sales@interactmedia.net.

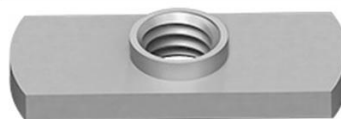


Most of the assembly has been done for you. There are only a couple simple things you need to do to complete the assembly and attach the teleprompter to your tripod.

1. Raise the frame with the glass to a 45 degree angle: To do this, loosen the Clamp Blocks using the blue knobs, raise the frame with the glass to a 45 degree angle, and tighten the blue knobs to keep framed glass in place.



2. Remove the Weld Nut: On the Platform, a screw is screwed into a Weld Nut. These were assembled together for transport and so you could find them easily. Unscrew the screw from the Weld Nut. You may discard the screw because it will not be used.



Weld Nut

3. Attach the teleprompter to your tripod: Place the teleprompter on the tripod with the tripod head screw going through the slot on the Bottom Plate. Position the tripod head screw closer to the back of the platform. See the photo at the top of the first page as a guide. This causes less of an issue with the Weld Nut interfering with the tablet and helps secure your tablet to the teleprompter in conjunction with the rubber Stop. Screw the Weld Nut onto the tripod head screw.



4. Secure the C-Bracket and iPhone adapter to the teleprompter: These two items and their connectors are found in a 2" x 3" x 4" box. Remove the items from the box and disassemble all parts. Re-attach the iPhone adapter to the outside of the C-Bracket using the same hole during disassembly. Connect the C-Bracket to the teleprompter platform by placing the screw (with the star washer) through the hole in the C-Bracket and then, through the bottom of the platform in the small slot on the right side of the teleprompter (from the perspective of standing behind the teleprompter). Screw the nut onto the screw.
5. There is a magnet, the size of a business card, attached to the Bottom Plate. You can peel it off of the metal, remove the white adhesive backing, and attached it to the back of your tablet or tablet case. You can use it to secure your tablet to the Bottom Plate using its magnetic properties. Keep in mind that tablets are not entirely flat on the bottom. If you decide to use it, strategically place it where it is most likely to come in full contact with the teleprompter. See Step 8 regarding securing your tablet to the teleprompter.
6. Position your camera behind the teleprompter and close to the glass so it does not record parts of the teleprompter. Zooming accomplishes the same thing.
7. Secure the black fabric Cape to the teleprompter: Lining up the three Velcro tabs on the Cape with those on the top and two sides of the frame (that holds the glass) and press.
8. Secure your tablet on the Platform: Turn on your tablet and have your teleprompter app ready to run. This will help you to orient the tablet on the teleprompter. Place the teleprompter on the Platform and push it to the back of the teleprompter. Loosen the rubber Stop that is attached to the teleprompter in the slot of the Platform. Push it up against the tablet and tighten it down by hand. **TIP:** When scrolling the text, make sure the teleprompter app's MIRROR feature is turned ON or set to YES. The text will display backwards on the tablet but appear correctly when reflected off the beam splitter glass.
9. When you want to remove the Cape, pull the Cape by the Velcro; NOT by the fabric itself. If you just pull at the fabric, the Velcro will separate from the fabric.

Recommended Teleprompter Apps

- DV Prompter - basic teleprompter app and it's free
- Teleprompt+ 3 - this app allows you to use a iPhone as a remote control to your iPad
- PromptSmart - listens to you speak and scrolls the text accordingly